

Model: SR210 (Finisher for AD1)		Date: 30-Jun-97	No: 001
Modified Article: Main Control Board		Prepared by: M.Horiike	
From: QAC 2nd Field Information Dept.			
Reason for Modification:	<input type="checkbox"/> Parts catalog correction <input type="checkbox"/> Vendor change <input type="checkbox"/> To meet standards <input type="checkbox"/> To facilitate assembly <input type="checkbox"/> To improve reliability    (    ) <input type="checkbox"/> Part standardization <input checked="" type="checkbox"/> Other		

In order to prevent the Main Control Board from being damaged when the power supply connector is plugged in or unplugged while the power is on, the zener diode on the Main Control Board has been changed from 14021061 to 2-14021424.

These maintain the voltage at the 5-volt line by quickly by-passing the surge current to ground.

For details refer to AD1 RTB-29.

Old part number	New part number	Description	Qty	Int	Page	Index	Note
A6665500	A6665510	Main Control Board	1→1	x/o	15	24	

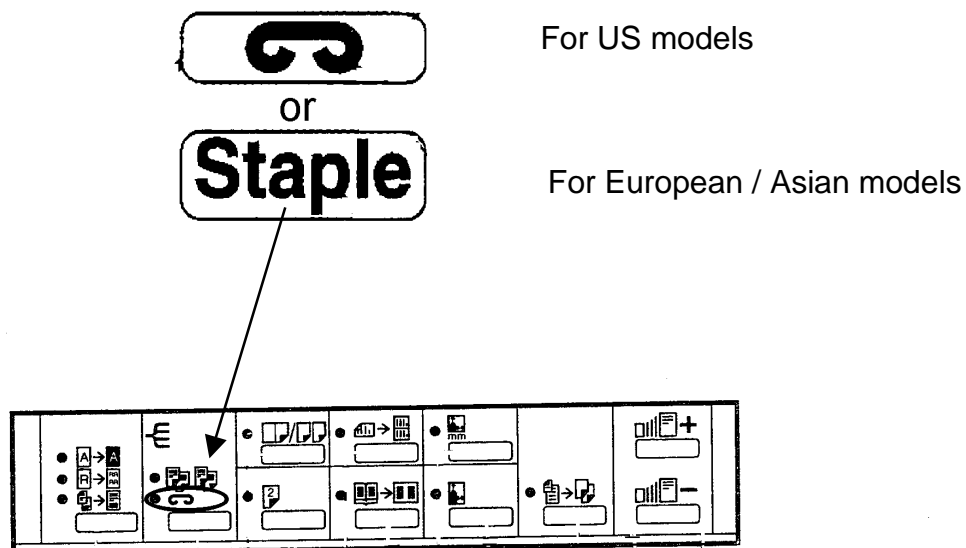
V/Hz	Option for	JAPAN PRODUCTION	
		CODE	SERIAL NUMBER
115/60	U.S.A	A666-10	AH87040001
115/60	U.S.A,CANADA	A666-15	7A77040001
115/60	U.S.A,CANADA	A666-17	A7397040001
220/50	EUROPE	A666-26	3L60470001
115/60	U.S.A	A666-55	L0157040726

Model: SR210		Date: 15-Apr-98	No: 2
Modified Article: Decal-Stapler		Prepared by: K.Ugaeri	
From: QAC Field Information Dept.			
Reason for Modification:	<input checked="" type="checkbox"/> Parts catalog correction <input type="checkbox"/> Vendor change <input type="checkbox"/> To meet standards <input type="checkbox"/> To facilitate assembly <input type="checkbox"/> To improve reliability    (    ) <input type="checkbox"/> Part standardization <input type="checkbox"/> Other		

The following decal is missing. Please add this part to your part catalog.

Old part number	New part number	Description	Qty	Int	Page	Index
	A6664940	Decal – Stapler	1			

After installing an SR210 on an AD1 or AD1E, this decal must be put on the operation panel as shown below.

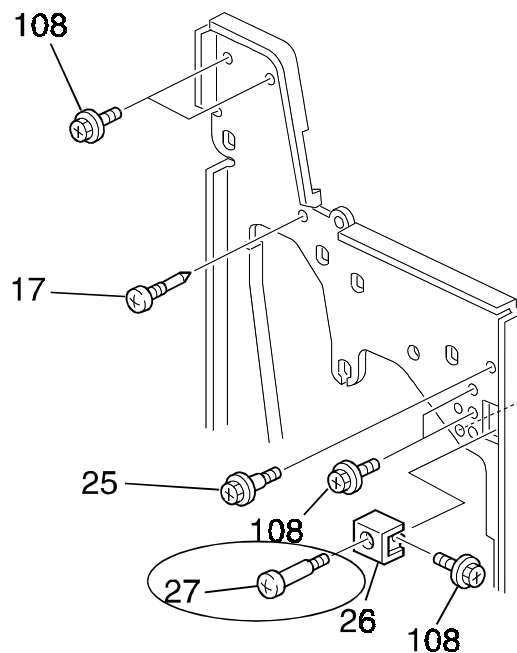


Model: SR210		Date: 31-Oct-98	No: 3
Modified Article: Stepped Screw		Prepared by: M.Tsuyuki	
From: GTS and S Field Information Dept.			
Reason for Modification:	<input checked="" type="checkbox"/> Parts catalog correction	<input type="checkbox"/> Vendor change	<input type="checkbox"/> To meet standards
	<input type="checkbox"/> To facilitate assembly	<input type="checkbox"/> To improve reliability	( )
	<input type="checkbox"/> Part standardization	<input type="checkbox"/> Other	

The index no. 27 on page 5 of the parts catalog is not mentioned. Please add the following part to your parts catalog.

Part No.	Description	Index No.
A6661419	Stepped Screw – M4 x 6	27

## 2. ENTRANCE SECTION (A666)



Model: AD1 Finisher		Date: 15-Oct-99	No.: MA666004
Modified Article: Grip Link Stay and Screw		Prepared by: K. Ugaeri	
From: Technical Service Dept., GTS Division			
Reason for Modification:	<input checked="" type="checkbox"/> Parts catalog correction	<input type="checkbox"/> Vendor change	<input type="checkbox"/> To meet standards (      )
	<input type="checkbox"/> To facilitate assembly	<input type="checkbox"/> To improve reliability	
	<input type="checkbox"/> Part standardization	<input type="checkbox"/> Other	

Please correct the following part numbers in the SR210 parts catalog.  
( Finisher for the ADAM).

## SR210 (A666)

Old part number	New part number	Description	Qty	Int	Page	Index	Note
A6661412	A6661413	Grip Link Stay	1		5	26	P/N correction
(Missing)	A6661419	Stepped Screw - M4x6	1		5	27	P/N missing



Model: AD1 Finisher		Date: 22-Mar-00	No.: MA666005
Modified Article: Lower Exit Guide Plate		Prepared by: K.Ugaeri	
From: GTS Technical Service Dep.			
Reason for Modification:	<input checked="" type="checkbox"/> Parts catalog correction	<input type="checkbox"/> Vendor change	<input type="checkbox"/> To meet standards (      )
	<input type="checkbox"/> To facilitate assembly	<input type="checkbox"/> To improve reliability	
	<input type="checkbox"/> Part standardization	<input type="checkbox"/> Other	

Old part number	New part number	Description	Qty	Int	Page	Index	Note
A6664145	A6664140	Guide Plate- Lower - Exit			7	1	